

# Preventing Cardiovascular Diseases

## Including Heart Disease, Stroke, TIA & Peripheral Vascular Disease

The root cause of most cases of cardiovascular disease is a build up of atheroma - a fatty deposit within the inside lining of arteries. Lifestyle factors that can reduce the risk of forming atheroma and developing cardiovascular diseases include: not smoking, choosing healthy foods, regular physical activity, keeping your weight and waist size down, and drinking alcohol in moderation. If you have a high risk of developing a cardiovascular disease, drug treatment to reduce blood pressure and/or cholesterol may also be advised. A daily low dose of aspirin is also advised for some people at high risk.

### What is cardiovascular disease?

Cardiovascular diseases are diseases of the heart (cardiac muscle) or blood vessels (vasculature). However, in practice, when doctors use the term 'cardiovascular disease' they usually mean diseases of the heart or blood vessels that are caused by atheroma.

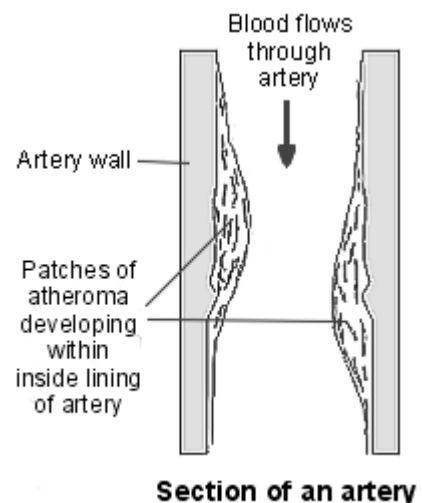
The rest of this leaflet briefly discusses atheroma, the diseases atheroma can cause, and ways of preventing a build up of atheroma and preventing the diseases it causes.

### What is atheroma (atherosclerosis)?

Patches of atheroma are like small fatty lumps that develop within the inside lining of arteries (blood vessels). Atheroma is also known as 'atherosclerosis' and 'hardening of the arteries'. Patches of atheroma are often called 'plaques' of atheroma.

A patch of atheroma makes an artery narrower, which can reduce the blood flow through the artery. Over time, patches of atheroma can become larger and thicker.

Sometimes a patch of atheroma may develop a tiny 'crack' or 'rupture' on the inside surface of the blood vessel. This may trigger a blood clot (thrombosis) to form over the patch of atheroma which may completely block the blood flow. Depending on the artery affected, a blood clot that forms over a patch of atheroma can cause a heart attack, a stroke, or other serious problems.



### What are the cardiovascular diseases caused by atheroma?

#### Heart disease

The term 'heart disease', or 'coronary heart disease', is used for conditions caused by narrowing of one or more of the coronary (heart) arteries by atheroma. The problems this can cause include: angina, heart attack, and heart failure. (It is confusing as there are other heart conditions such as heart valve problems, congenital heart problems, etc. However, these are not usually included when we talk about 'heart disease'.) Heart disease is common in the UK in people over 50.

#### Cerebrovascular disease - stroke and TIA

Cerebrovascular disease means a disease of the arteries in the brain (cerebrum). The problems this can cause include a stroke and a TIA (transient ischaemic attack). A stroke means that part of the brain is suddenly damaged. The common cause of a stroke is due to an artery in the brain which becomes blocked by a blood clot (thrombus). The blood clot usually forms over some atheroma. A TIA is a disorder caused by temporary lack of blood supply to a part of the brain.

## Peripheral vascular disease

Peripheral vascular disease is narrowing due to atheroma affecting arteries other than arteries in the heart or brain. The arteries that take blood to the legs are the most commonly affected.

If you can prevent a build up of atheroma in the arteries, you are less likely to develop the above diseases. If you already have one of the above diseases you may prevent or delay it from getting worse if you prevent further build-up of atheroma.

## Risk factors

Everybody has some risk of developing atheroma. However, certain 'risk factors' increase the risk. Risk factors include:

- Lifestyle risk factors that can be prevented or changed:
  - Smoking.
  - Lack of physical activity (a sedentary lifestyle).
  - Obesity.
  - An unhealthy diet.
  - Excess alcohol.
- Treatable or partly treatable risk factors:
  - Hypertension (high blood pressure).
  - High cholesterol blood level.
  - High triglyceride (fat) blood level.
  - Diabetes.
  - Kidney diseases causing diminished kidney function.
- Fixed risk factors - ones that you cannot alter:
  - A strong family history. This means if you have a father or brother who developed heart disease or a stroke before they were 55, or in a mother or sister before they were 65.
  - Being male.
  - An early menopause in women.
  - Age. The older you become, the more likely you are to develop atheroma.
  - Ethnic group. For example, people who live in the UK with ancestry from India, Pakistan, Bangladesh, or Sri Lanka have an increased risk.

However, if you have a fixed risk factor, you may want to make extra effort to tackle any lifestyle risk factors that can be changed.

Note: Some risk factors are more 'risky' than others. For example, smoking causes a greater risk to health than obesity. Also, risk factors interact. So, if you have two or more risk factors, your health risk is much more increased than if you just have one. For example, a middle aged male smoker who does little physical activity and has a strong family history of heart disease has quite a high risk of developing a cardiovascular disease such as a heart attack or stroke before the age of 60.

Research is looking at some other factors that may be risk factors. For example, high blood levels of apolipoprotein B or homocysteine are being investigated as possible risk factors.

Known risk factors that can be prevented, changed or treated are now discussed further.

## Lifestyle risk factors that can be prevented and/or changed

### Smoking

Lifetime smoking roughly doubles your risk of developing heart disease. (The chemicals in tobacco get into the bloodstream from the lungs to do the damage to the arteries and other parts of the body.) Your risk of having a stroke, and developing other diseases such as lung cancer, mouth cancer and throat cancer, are also increased. Stopping smoking is often the single most effective thing that you can do to reduce your health risk. The increased risk falls rapidly immediately after stopping smoking (although it may take a few years before the excess risk reduces completely). If you smoke and are having difficulty in stopping, then see your practice nurse for help and advice.

### **Lack of physical activity - a sedentary lifestyle**

People who are physically active have a lower risk of developing cardiovascular diseases compared to inactive people. To gain health benefits you should do at least 30 minutes of moderate physical activity, on most days (at least five days per week).

- **30 minutes in a day** is probably the minimum to gain health benefits. However, you do not have to do this all at once. For example, cycling to work and back 15 minutes each way adds up to the total of 30 minutes.
- **Moderate physical activity** means that you get warm, mildly out of breath, and mildly sweaty. It does not have to be intense. For example: brisk walking, jogging, swimming, cycling, etc. However, some evidence does suggest that the more vigorous the exercise, the better for health - particularly for preventing heart disease.
- **On most days.** You cannot 'store up' the benefits of physical activity. You need to do it regularly.

### **Obesity and overweight**

On average, if you are obese and reduce your weight by 10%, your chance of dying at any given age is reduced by about 20%. This is mainly because you are less likely to develop cardiovascular diseases, diabetes, or certain cancers. The increased health risk of obesity is most marked when the excess fat is mainly in the abdomen rather than on the hips and thighs. As a rule, a waist measurement of 102cm or above for men (92cm for Asian men) and 88cm or above for women (78cm for Asian women) is a significant health risk.

### **Diet**

Eating healthily helps to control obesity, and lower your cholesterol level. Both of these help to reduce your health risk. Also, there is some evidence that eating oily fish (herring, sardines, mackerel, salmon, kippers, pilchards, *fresh* tuna, etc) helps to protect against heart disease. It is probably the 'omega-3 fatty acids' in the fish oil that helps to help reduce the build-up of atheroma. Also, fruit and vegetables, as well as being low in fat, also contain 'antioxidants' and vitamins which may help to prevent atheroma building up. Briefly, a healthy diet means:

- AT LEAST five portions, and ideally 7-9 portions, of a *variety of* fruit and vegetables per day.
- THE BULK OF MOST MEALS should be starch-based foods (such as cereals, wholegrain bread, potatoes, rice, pasta), plus fruit and vegetables.
- NOT MUCH fatty food such as fatty meats, cheeses, full-cream milk, fried food, butter, etc. Use low fat, mono-, or poly-unsaturated spreads.
- INCLUDE 2-3 portions of fish per week. At least one of which should be 'oily'.
- If you eat meat it is best to eat lean meat, or poultry such as chicken.
- If you do fry, choose a vegetable oil such as sunflower, rapeseed or olive oil.
- Try not to add salt to food, limit foods that are salty such as processed foods.

### **Alcohol**

A small amount of alcohol (1-2 units per day) may help to protect you from heart disease. One unit is in about half a pint of normal strength beer, or two thirds of a small glass of wine, or one small pub measure of spirits. However, too much alcohol can be harmful. Men should drink no more than 21 units per week (and no more than four units in any one day). Women should drink no more than 14 units per week (and no more than three units in any one day).

## **Other treatable or partially treatable risk factors**

### **High blood pressure**

You should have your blood pressure checked at least every 3-5 years. High blood pressure usually causes no symptoms, so you will not know if it is high unless you have it checked. However, over the years, high blood pressure may do some damage to the arteries and put a strain on your heart.

In some cases high blood pressure can be lowered by: losing some weight if you are overweight, regular physical activity, and eating healthily as described above. Medication may be advised if your blood pressure remains high. See separate leaflet called '*High Blood Pressure*' for details.

### **Cholesterol and other lipids**

In general, the higher the blood cholesterol level, the greater the risk of developing cardiovascular diseases. The risk that a high cholesterol level poses is greater if you also have other significant risk factors such as diabetes or high blood pressure. As a rule, no matter what your cholesterol level is, then lowering the level reduces your risk. This is why people at high risk of developing a cardiovascular disease are offered medication to lower their cholesterol level. A high blood level of triglyceride, another type of lipid (fat), also increases the health risk.

### **Diabetes and kidney disease**

The increased risk that these conditions pose to developing cardiovascular diseases can be modified. For example, good control of blood sugar levels in people with diabetes reduces the risk. Good control of blood pressure in people with diabetes and kidney diseases reduces the risk.

## **Assessing (calculating) your cardiovascular health risk**

A 'risk factor calculator' is commonly used by doctors and nurses to assess the cardiovascular health risk for an individual. A score is calculated which takes into account all your risk factors such as age, sex, smoking status, blood pressure, cholesterol level, etc. The calculator has been devised after a lot of research that monitored thousands of people over a number of years. The score gives a fairly accurate indication of your risk of developing a cardiovascular disease over the next 10 years. If you want to know your 'score', see your practice nurse or GP.

### **Who should have their cardiovascular health risk assessed?**

Current UK guidelines advise that the following people should be 'screened' to assess their cardiovascular risk:

- All adults aged 40 or more.
- Adults of any age who have:
  - A strong family history of early cardiovascular disease. This means if you have a father or brother who developed heart disease or a stroke before they were 55, or in a mother or sister before they were 65.
  - A first degree relative (parent, brother, sister, child) with a serious hereditary lipid disorder. For example, familial hypercholesterolaemia or familial combined hyperlipidaemia. These diseases are uncommon.

If you already have a cardiovascular disease or diabetes then you do not need to be screened. This is because you are already known to be in the high risk group.

### **What does the screening involve?**

A doctor or nurse will do a blood test to check your cholesterol and glucose (sugar) level. Your blood pressure will be measured. Your smoking status will be recorded. A score is calculated based on these measurements plus your age and your sex. An adjustment to the score is made for certain other factors such as strong family history and ethnic origin.

### **What does the assessment score mean?**

You are given a score as a % chance. So, for example, if your score is 30% this means that you have a 30% chance of developing a cardiovascular disease within the next 10 years. This is the same as saying a 30 in 100 chance (or a 3 in 10 chance). In other words, in this example, 3 in 10 people with the same risk factors that you have will develop a cardiovascular disease within the next 10 years. Note: the score cannot say if you will be one of the three. It cannot predict what will happen to each individual person. It just gives you the odds.

You are said to have a:

- high risk - if your score is 20% or more. (That is, a 2 in 10 chance or more of developing a cardiovascular disease within the next 10 years.)
- moderate risk - if your score is 10-20% (between 1 in 10 and 2 in 10 chance).
- low risk - if your score is less than 10% (less than a 1 in 10 chance).

## Who should be treated to reduce their cardiovascular health risk?

Treatment to reduce the risk of developing a cardiovascular disease is usually offered to people with a high risk. That is:

- People with a risk assessment score of 20% or more. That is, if you have a 2 in 10 chance or more of developing a cardiovascular disease within the next 10 years
- People with an existing cardiovascular disease (to lower the chance of it getting worse, or of developing a further disease).
- People with diabetes. If you have diabetes, the time that treatment is started to reduce cardiovascular risk depends on factors such as: your age, how long you have had diabetes, your blood pressure, and and if you have any complications of diabetes.
- People with certain kidney disorders.

## What treatments are available to reduce the risk?

### If you are at high risk

If you are at high risk of developing a cardiovascular disease then drug treatment is usually advised along with advice to tackle any lifestyle issues. This usually means:

- Drug treatment, usually with a statin drug, to lower your cholesterol level. No matter what your current cholesterol level, drug treatment is advised. The aim is to reduce the level by 25% or to get the level under 4 mmol/l - whichever is the biggest reduction. See leaflet called '*Cholesterol*' for details.
- Drug treatment to lower blood pressure if your blood pressure is high. This is even if your blood pressure is just mildly high. See leaflet called '*High Blood Pressure*' for details.
- A daily low dose of aspirin (75 mg daily) - depending on your age and other factors. Aspirin helps to prevent blood clots from forming on patches of atheroma. See leaflet called '*Aspirin to Prevent Blood Clots*' for details.
- Where relevant, to encourage you even more to tackle lifestyle risk factors. This means to:
  - stop smoking if you smoke.
  - eat a healthy diet.
  - keep your weight and waist in check.
  - take regular physical activity.
  - cut back if you drink a lot of alcohol.

You may be offered a referred to specialist services. For example, to a dietician to help you to lose weight and eat a healthy diet, to a specialist 'stop smoking clinic', or to a supervised exercise programme.

For details on exactly how much risk is reduced by lowering and treating risk factors, see the Guidance at Prodigy - [www.prodigy.nhs.uk](http://www.prodigy.nhs.uk) called '*Cardiovascular Disease Risk - Assessment and Management*'.

### What if I am at moderate or low risk?

If you are not in the high risk category, it does not mean you have no risk - just a lesser risk. Drug treatment is not usually prescribed. However, you may be able to reduce whatever risk you do have even further by any relevant changes in lifestyle (as described in the above paragraph).

Some people with a moderate risk buy a low dose statin drug from a pharmacy to lower their cholesterol level. (Statin drugs are available on prescription and funded by the NHS if your risk is high. However, you need to buy them if your risk is not in the high category. But if you do buy a statin and take it regularly, it is best to let you doctor know so that it can be put on your medical record.)